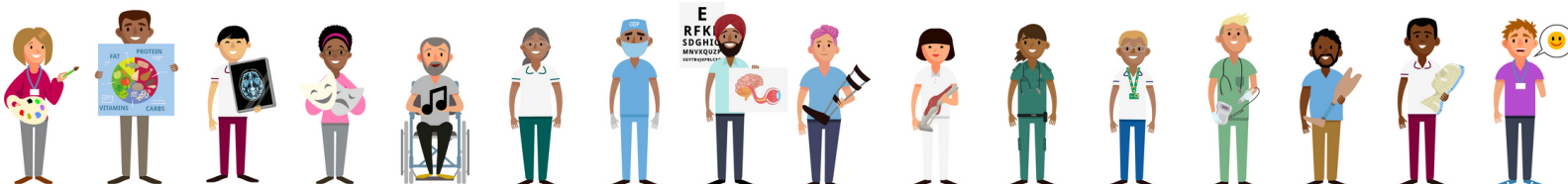


ALLIED HEALTH PROFESSIONS APPRENTICESHIPS HANDBOOK



BLACK COUNTRY INTEGRATED CARE SYSTEM



CONTENTS

PAGES	CONTENTS
3	FOREWORD
4	INTRODUCTION
5	14 ALLIED HEALTH PROFESSIONS
6	THE BASICS ON APPRENTICESHIPS
7	AHP APPRENTICESHIP PATHWAYS
8	MATHS AND ENGLISH - FUNCTIONAL SKILLS
9	LEVEL 2 - HEALTHCARE SUPPORT WORKER
10	LEVEL 3 - SENIOR HEALTHCARE SUPPORT WORKER
11	LEVEL 3 - TEAM LEADER/SUPERVISOR
12	LEVEL 5 - ASSISTANT PRACTITIONER
13	LEVEL 5 - OPERATIONS/DEPARTMENTAL MANAGER
14	LEVEL 6 APPRENTICESHIPS
15	LEVEL 6 - DIETICIAN
16-17	LEVEL 6 - RADIOGRAPHER
18	LEVEL 6 - OCCUPATIONAL THERAPIST
19-20	LEVEL 6 - OPERATING DEPARTMENT PRACTITIONER
21	LEVEL 6 - PARAMEDIC
22	LEVEL 6 - PHYSIOTHERAPIST
23	LEVEL 6 - PODIATRIST
24	LEVEL 6 - PROSTHETIST AND ORTHOTIST
25	LEVEL 6 - SPEECH AND LANGUAGE THERAPIST
26	LEVEL 6 - OSTEOPATH
27	LEVEL 6 - ORTHOPTIST
28	LEVEL 6 - DRAMA THERAPIST
29	LEVEL 6 - MUSIC THERAPIST
30	LEVEL 6 - CHARTERED MANAGER
31	LEVEL 6 - ENHANCED CLINICAL PRACTITIONER
32	LEVEL 7 - ADVANCED CLINICAL PRACTITIONER
33	LEVEL 7 - SENIOR LEADER AWARD
34	LEVEL 7 - ART THERAPIST
35	NHS LEADERSHIP ACADEMY COURSES
36	TRUST CONTACTS
37	USEFUL LINKS

FOREWORD

Published in January 2019, the Long-Term Plan established a framework for how the NHS sets out to deliver high quality, sustainable care into the future. Recommendations included expanding the number of Nurses, Midwives, Allied Health Professionals (AHPs), and other staff. Our focus is Allied Health Professionals who support the demand profile of the NHS and work independently across the spectrum of care from primary to specialist care provision.

Apprenticeships offer important opportunities for widening social participation in the NHS workforce. Higher Education Institutions and the NHS have worked collaboratively to develop an accessible route to a healthcare career in an 'earn as you learn' format. Apprenticeship standards were developed for the 14 AHP professions in conjunction with governing bodies and funding was made accessible via the Apprenticeship Levy.

More recently, the publication in June 2023 of the NHS Long-Term Workforce plan (LTWP) highlights the need for ensuring the NHS has the workforce it needs for the future. The LTWP indicates the importance of AHPs in the NHS, with the aim to increase the AHP workforce by 71,000 across the lifespan of the LTWP. The LTWP also encourages the need for use of apprenticeships for access to professions, with the targets of an increased 25% by 2031.

The following handbook has been developed on behalf of the Black Country AHP and Nursing Faculty by Rianna Millington, AHP Programme Lead, working alongside the Black Country AHP Apprenticeships Task and Finish Group with representation from all Black Country Trusts. This handbook is based upon a document devised by leadership students of Leanne Horsley, Charlie Holden and Becky McFarlane, at Sherwood Forest Hospitals NHS Foundation Trust.

Visit the following websites for more information on the NHS Long Term Plan and NHS LTWP:

- <https://www.longtermplan.nhs.uk/>
- <https://www.england.nhs.uk/publication/nhs-long-term-workforce-plan/>

INTRODUCTION



Inside this booklet you will find information about apprenticeship programmes run across the Black Country, and further around the UK. The handbook seeks to arm potential apprentices, service leads and apprenticeship leads with the knowledge needed for career growth.

Please remember when using the guide, that courses and guidelines may alter, therefore please follow the relevant links or contact your apprenticeship leads to obtain further information. Please also remember for potential apprentices, you MUST have your managers support, so please start by having that career conversation.

Apprenticeships are hands-on paid jobs allowing the employee to learn valuable skills and obtain a qualification at the end of the course and vary between 1- 6 years.

For the majority of apprenticeships:

- Fees will be covered by your employer from the apprenticeship levy.
- You will not be eligible for student finance as you will receive a salary.

The Apprenticeship levy was introduced by the government to fund plans to increase apprenticeship numbers and quality.

For all apprenticeships, regardless of level, the apprentice must have achieved Maths & English level 2 (GCSE) by the end of the apprenticeship.

Visit the following websites for more information on apprenticeships:

- <https://www.apprenticeships.gov.uk/influencers/what-is-an-apprenticeship#>
- <https://apprenticeshipguide.co.uk/what-is-an-apprenticeship-2/>
- <https://haso.skillsforhealth.org.uk/standards/#3aw2ga-accordion-label>

14 ALLIED HEALTH PROFESSIONS



The Allied Health Professions (AHPs) are the third largest workforce in the NHS. In the main they are degree level professions, and are professionally autonomous practitioners. 13 of the 14 AHPs are regulated by the Health and Care Professions Council (HCPC) with Osteopaths regulated by the General Osteopathic Council (GOC).

There are 14 AHP professions in the NHS, as below:

- 1. Art therapists**
- 2. Dietitians**
- 3. Drama therapists**
- 4. Music therapists**
- 5. Occupational therapists**
- 6. Operating department practitioners**
- 7. Orthoptists**
- 8. Osteopaths**
- 9. Paramedics**
- 10. Physiotherapists**
- 11. Podiatrists**
- 12. Prosthetists and orthotists**
- 13. Radiographers**
- 14. Speech and language therapists**

You may have thought that working as a registered AHP is the only option. However, there are a whole range of roles in healthcare which provide essential support and care to patients, and their fellow colleagues. These roles include support workers, senior support workers, assistants and assistant practitioners who work alongside the AHPs, playing a crucial role in delivering safe and effective care.

To find out more about all AHP roles, please visit this link:

<https://www.england.nhs.uk/ahp/role/>

THE BASICS ON APPRENTICESHIPS

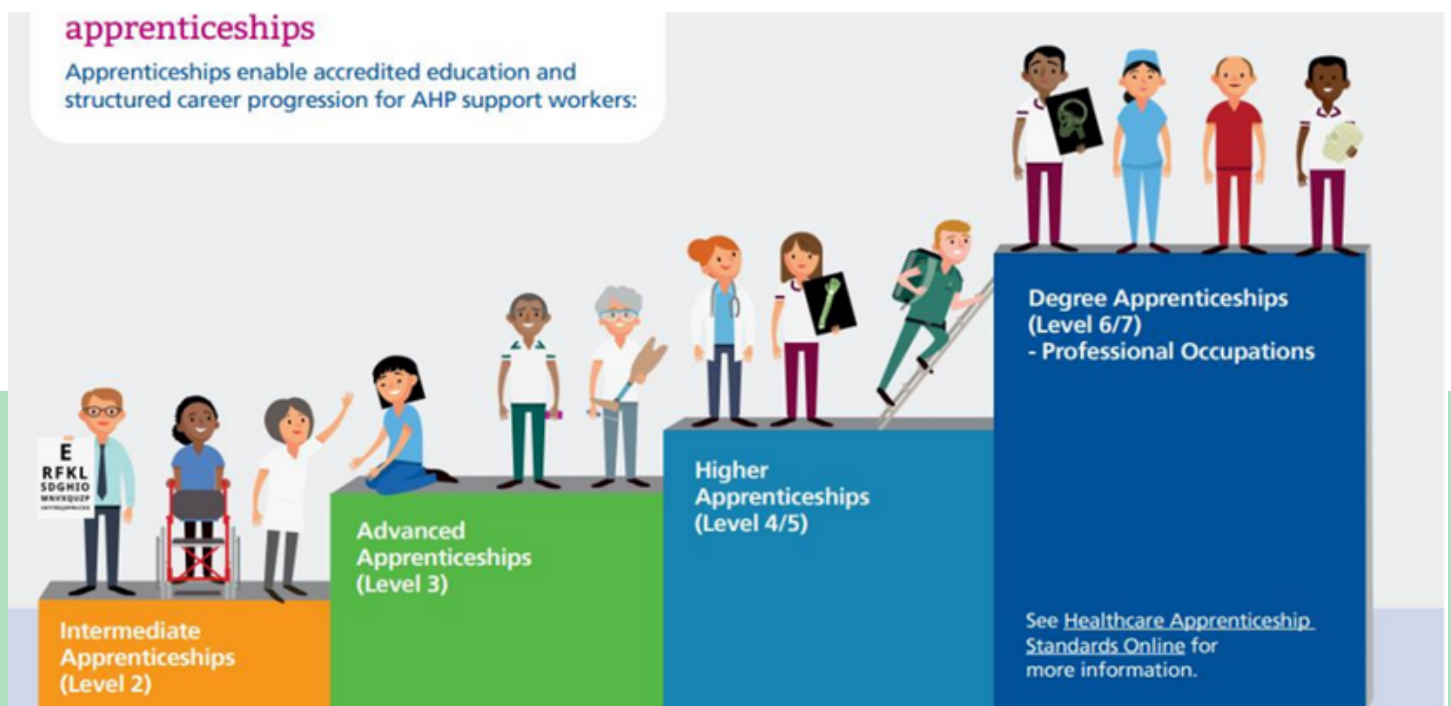
WHAT IS AN APPRENTICESHIP?

- An apprenticeship, which must last for a minimum of 12 months, combines hands-on work with the opportunity to train and obtain qualifications.
- It is paid employment, so you earn while you learn.
- An apprentice must spend 80% on the job and at least 6hrs off the Job (OTJ) for those working 30+hrs a week. The rest of your time is spent applying your knowledge and skills in the actual workplace, doing the job that you set out to get.
- At the end of it, you will gain official certification, which will be equivalent to traditional qualifications.
- Apprenticeships are designed to be flexible.

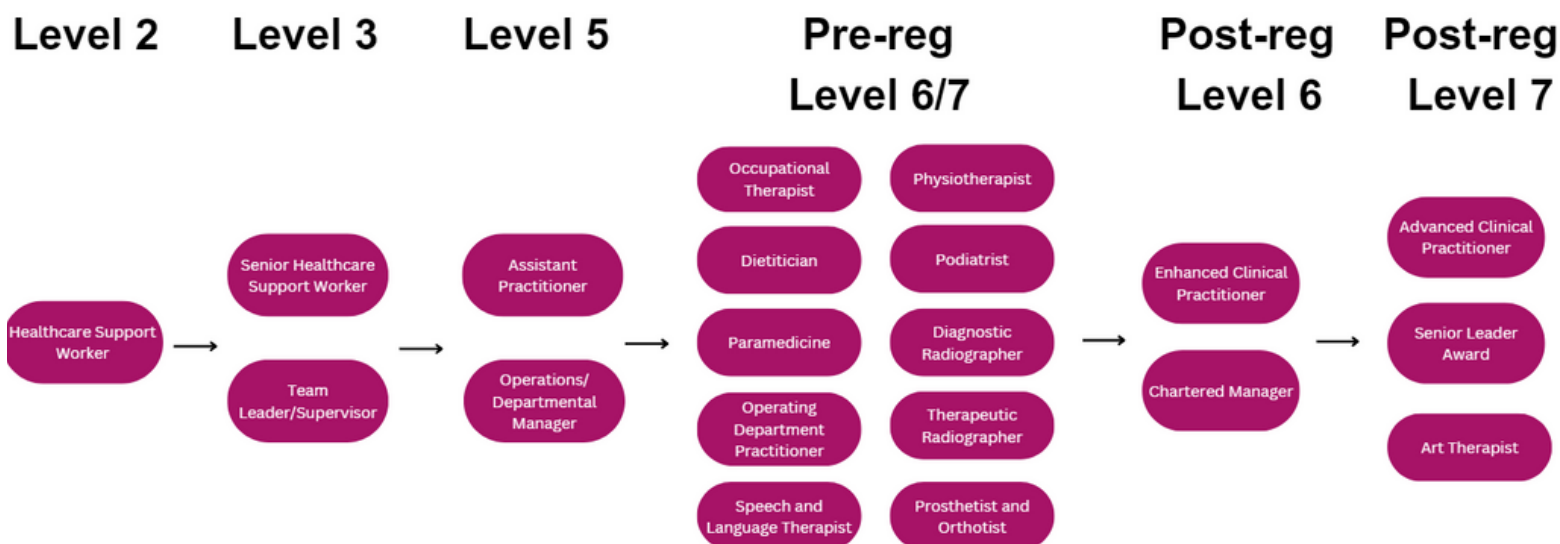
APPRENTICESHIP LEVELS

Apprenticeship levels are set and equivalent to as follows:

- 2 (Intermediate): GCSEs
- 3 (Advanced): A-levels
- 4 (Higher): foundation degree
- 5 (Higher): foundation degree/first year of bachelor's degree
- 6 (Degree): bachelor's degree
- 7 (Degree): master's degree



AHP APPRENTICESHIP PATHWAYS



APPRENTICESHIP PATHWAYS

Not all AHP professions have apprenticeship routes for access at present, although many are in development and it looks promising, the course development is still in its infancy.

Since 2016, employer led trailblazer groups have been designing degree and master level apprenticeship qualifications for the AHP workforce. As a result, the majority of AHP professions now have a degree level apprenticeship.

In addition to the aforementioned degree apprenticeships, AHP employers can also utilise other apprenticeship levels for the recruitment and development of AHP Support workforce, such as:

- Healthcare Support Worker (Level 2)
- Senior Healthcare Support Worker - Therapies support pathway (level 3)
- Team Leader/Supervisor (Level 3)
- Assistant Practitioner (Level 5)
- Operations/Departmental Manager (Level 5)

MATHS AND ENGLISH FUNCTIONAL SKILLS

All apprenticeships require the apprentice to have passed Level 2 English & Maths by the end of their apprentice.

For all level 2 qualifications, please initially contact your Trust apprenticeship lead to enrol you onto an online or face to face course.

- Learning – Maths & English

Fully Funded access to Basic Key Skills Builder (BKSB) software that supports functional skills learning for all Health and Social Care employers. Allows self-directed study from anywhere via a laptop, PC, tablet mobile phone.

<https://haso.skillsforhealth.org.uk/bksb/>

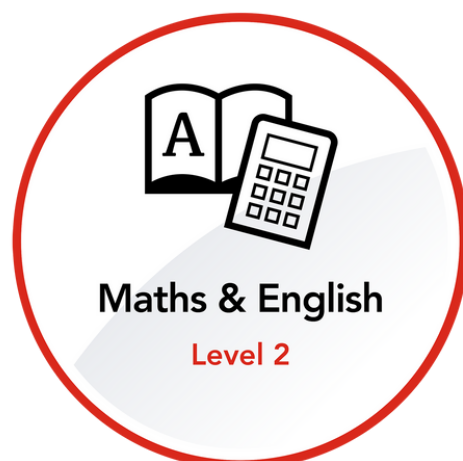
- Exams – Maths & English

There is also free access to the English & Maths Lv2 exams with Open Awards. The FS exams are either online or on paper.

<https://openawards.org.uk/what-we-offer/functional-skills/>

All Health & Social Care employees can gain Maths & English through the above scheme.

As well as online Level 2 English and Maths (functional skills), there are also options for local face to face providers, please speak to your apprentice team about this.



LEVEL 2 - HEALTHCARE SUPPORT WORKER

Healthcare Support Worker (ST012)

- Healthcare support worker apprenticeships usually last between 12 to 18 months
- Healthcare support workers are trained to carry out routine clinical and non-clinical duties all around supporting patient care. You will be supported by a registered healthcare practitioner who will directly or indirectly supervise your work.

Local providers:

- Walsall College - <https://www.walsallcollege.ac.uk/modes-of-study/apprenticeships/>
- Sandwell and West Birmingham NHS Trust - <https://www.swbh.nhs.uk/work-for-us/apprenticeships/>
- South Staffordshire College - <https://www.southstaffs.ac.uk/apprenticeships/>



APPROVED	Healthcare Apprenticeships	Healthcare Support Worker	
	Level 2	Occupation	Qualification
	Duration 12-18 MONTHS	Healthcare support workers (HCSWs) work as part of a team providing high quality and compassionate care to individuals. You will carry out well-defined routine clinical duties like monitoring an individual's conditions.	Apprentices without Level 1 English and Maths will need to achieve this level and take the test for Level 2 English and Maths prior to completion of their Apprenticeship.
Ref. ST0216			

LEVEL 3 - SENIOR HEALTHCARE SUPPORT WORKER

Senior Healthcare Support Worker (ST0217)

Senior healthcare support workers work in a range of settings for example in a hospital, as part of a community team, in a day-case unit, birthing centre, individual's homes, operating theatres, nursing or care homes, hospices and in general practice. The broad purpose of the occupation is support registered healthcare professionals in the delivery of high quality and compassionate health and care services.

- This apprenticeship usually last between 18-24 months
- The role of a senior healthcare support worker involves the support of registered practitioners in delivering high quality healthcare to all individuals.
- There are AHP specific pathways, dependant upon your speciality.
- 118 providers as of October 2023, varying in course delivery, locality and block/day release requirements. Please contact your local apprenticeship lead for further information on the provider they utilise.

Known local providers:

Sandwell and West
Birmingham NHS Trust -
<https://www.swbh.nhs.uk/work-for-us/apprenticeships/>

Walsall College -
<https://www.walsallcollege.ac.uk/modes-of-study/apprenticeships/>

Dudley College of
Technology - <https://dudleycol.ac.uk/apprentices/>

Healthcare Apprenticeships

APPROVED

Level 3

Duration 18-24 MONTHS

Ref. ST0217

Senior Healthcare Support Worker

Occupation	Progression
Senior Healthcare Support Workers help registered practitioners deliver healthcare services to people. As an experienced support worker, you carry out a range of clinical and non-clinical healthcare or therapeutic tasks.	After a period of working and gaining experience, you may be able to work towards an Assistant Practitioner or Nursing Associate post or, providing you meet the entry requirements, apply to university to become a registered healthcare practitioner.

LEVEL 3 - TEAM LEADER/ SUPERVISOR

Team Leader/Supervisor (ST0384)

This course has been designed for team leaders or supervisors in a first line management role, with operational or project responsibilities or responsibility for managing a team to deliver a clearly defined outcome. They provide direction, instructions and guidance to ensure the achievement of set goals. Working in the private, public or third sector and in all sizes of organisation, specific responsibilities will vary. Key responsibilities are likely to include supporting, managing and developing team members, managing projects, planning and monitoring workloads and resources, delivering operational plans, resolving problems, and building relationships internally and externally.

Job roles include Supervisor, Team leader, Project Officer, Shift Supervisor, Foreperson, and Shift Manager, or those aspiring to work in these roles.

Healthcare Apprenticeships

Level 3

Duration 12-18 MONTHS

Ref. ST0384

APPROVED

Team Leader / Supervisor

Occupation
A team leader/supervisor is a first line management role, with operational/project responsibilities or responsibility for managing a team to deliver a clearly defined outcome.

Progression
On completion, apprentices may choose to register as Associate members with the Chartered Management Institute and/or the Institute of Leadership & Management, to support their professional career development and progression.

- 599 Providers as of October 2023.
- Entry requirements - Individual employers will set their own selection criteria. This can include a minimum of Level 2 Maths and English. Apprentices without level 2 English and Maths will need to achieve Functional Skills Level 2 prior to taking final assessments.

Known local providers:

Dudley College of Technology - <https://dudleycol.ac.uk/apprentices/>
14 month Programme with Monthly College Session

LEVEL 5 - ASSISTANT PRACTITIONER

Assistant Practitioner - health (ST0215)

- Assistant practitioners work as part of the wider health and social care team and have direct contact with patients, service users or clients providing high quality and compassionate care.
- Assistant practitioners work at a level above that of Healthcare support workers and have a more in-depth understanding about factors that influence health and ill-health.
- Pathways for the Assistant health practitioner can be specific to your AHP profession, with current pathways in the following areas at local Black Country providers:
 - Rehabilitation/Combined Therapies
 - Diagnostic and Therapeutic Radiography
 - Occupational Therapy
 - Physiotherapy
 - Mammography Associate
 - Speech and Language therapy
 - Theatres

Local Providers:

- Coventry University - <http://www.coventry.ac.uk/apprenticeships>
- Birmingham City University - <https://www.bcu.ac.uk/courses/search?type=9>
- University College Birmingham - <https://www.ucb.ac.uk/study/apprenticeships/>
- University of Worcester - planned from September 2024 - <https://www.worcester.ac.uk/study/apprenticeships/courses.aspx#>

APPROVED

Healthcare
Apprenticeships

Level
5

Duration
18-24
MONTHS

Ref.
ST0215

Assistant Practitioner (Health)

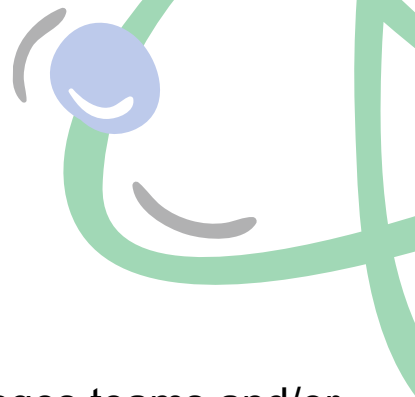
Occupation

Assistant Practitioners work as part of the wider health and social care team and have direct contact with patients, service users or clients providing high quality and compassionate care.

Progression

For those Assistant Practitioners who wish to progress into Registered Practice, the apprenticeship can provide credits into some Higher Education programmes aligned to professional registration.

LEVEL 5 - OPERATIONS/ DEPARTMENTAL MANAGER



Operations/Departmental Manager (ST0385)

An operations/departmental manager is someone who manages teams and/or projects, and achieving operational or departmental goals and objectives, as part of the delivery of the organisations strategy. They are accountable to a more senior manager or business owner. Working in the private, public or third sector and in all sizes of organisation, specific responsibilities and job titles will vary, but the knowledge, skills and behaviours needed will be the same. Key responsibilities may include creating and delivering operational plans, managing projects, leading and managing teams, managing change, financial and resource management, talent management, coaching and mentoring.

The infographic is set against an orange background. On the left, a green vertical bar contains the word 'APPROVED' in white. To its right, three teal circles are stacked vertically, containing the text 'Level 5', 'Duration 30 MONTHS', and 'Ref. ST0385'. Above these circles, a purple box says 'Healthcare' and a pink box says 'Apprenticeships'. The main title 'Operations / Departmental Manager' is centered at the top in white. Below it, two white boxes with orange borders provide details. The first box, titled 'Occupation', describes the role. The second box, titled 'Professional Registration', explains the registration process with the CMI.

Healthcare Apprenticeships	Operations / Departmental Manager	Professional Registration
Level 5	Occupation An operations / departmental manager is someone who manages teams and/or projects, and achieving operational or departmental goals and objectives, as part of the delivery of the organisations strategy.	On completion, apprentices can register as full members with the Chartered Management Institute and/or the Institute of Leadership & Management, and those with 3 years' of management experience can apply for Chartered Manager status through the CMI.
Duration 30 MONTHS		
Ref. ST0385		

- Over 450 Providers as of October 2023.
- Entry requirements - Individual employers will set their own selection criteria. This can include a minimum of Level 2 Maths and English. Apprentices without level 2 English and Maths will need to achieve Functional Skills Level 2 prior to taking final assessments.

Known local providers:

Dudley College of Technology - <https://dudleycol.ac.uk/apprentices/>
24 month Programme with Monthly College Session

LEVEL 6 APPRENTICESHIPS

Level 6 Apprenticeships

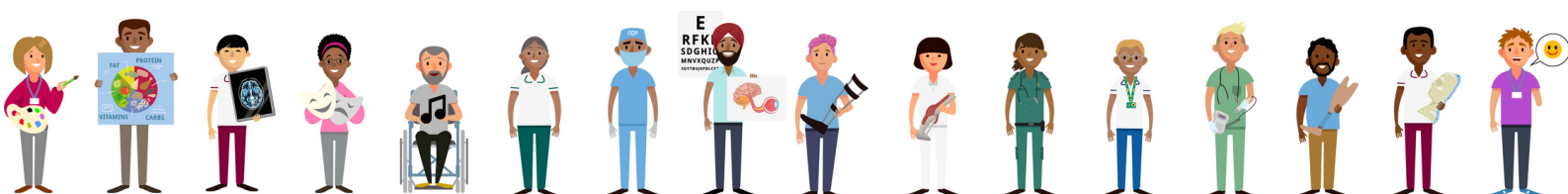
Level 6 apprenticeships are available for degree routes to the following AHP professions at present:

- Dietician
- Diagnostic Radiographer
- Occupational Therapist
- Operating Department Practitioner
- Paramedic
- Physiotherapist
- Podiatrist
- Prosthetist and Orthotist
- Speech and Language Therapist
- Therapeutic Radiographer

Further information on each degree level 6 AHP apprenticeship is available on the next few pages.

There is also options for access to further progression, with courses such as Chartered Manager (level 6) and Enhanced Clinical Practitioner (level 6).

There are certain professions which currently do not have a Level 6 apprenticeship offering. For these, please look into the specific careers for further information on pathways.



DIETITIAN

Dietitian (Integrated degree) ST0599 Level 6

Dietitians assess, diagnose, plan, implement, monitor, review and evaluate nutrition and dietetic interventions, utilising the most up-to-date public health and scientific research on food, health and disease to inform their practice. They work in partnership with a diverse range of people to provide tailored, evidence-based practical advice to individuals, groups and populations across the lifespan. They are key members of the MDT and use advanced communication and behaviour-change skills to influence patients health and wellbeing.

SHEFFIELD HALLAM UNIVERSITY:

Entry requirements:

- 2 GCSE passes at grade C or grade 4 or above in Mathematics and English.

Plus the following:

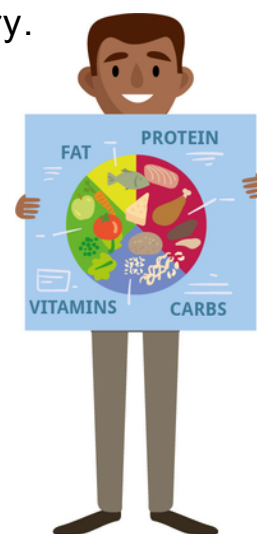
- Evidence of successful formal study at level 3
- A minimum of 6 months experience in a health and social care capacity or 96 UCAS points from 3 A levels/Level 3 BTEC National Qualifications Merit, Merit, Merit/Successful completion of an Access to Higher Education (HE) Diploma/T-Levels/Higher Technical Qualifications (Level 3)/ Previous degree level or higher study including Foundation Degrees

Course duration: Typically 36 months

Course fees & funding:

- Fees will be covered by your employer from the apprenticeship levy.
- You will not be eligible for student finance as you will receive a salary.

Website: <https://www.shu.ac.uk/study-here/higher-and-degree-apprenticeships/health-and-social-care/dietetics>



APPROVED

Healthcare Apprenticeships

Dietitian (Degree)

Level	Occupation	Professional Recognition
6	This occupation is found in the health sector. Dietitians are predominantly employed by the NHS, working in hospitals (seeing patients both on wards and in out-patient clinics) and in the community.	British Dietetic Association / Full member.
Duration 48 MONTHS		
Ref. ST0599		

Other Locations offering Apprenticeships in the UK:

- Teeside University
- Coventry University - Level 7

RADIOGRAPHER

Diagnostic Radiographer (integrated degree) ST0619

Level 6

Diagnostic radiographers utilise the latest imaging technology to take high-quality images of inside the body. These images are used to diagnose and monitor illnesses/injuries so patients receive the correct treatment.

SHEFFIELD HALLAM UNIVERSITY

Entry requirements:

- **GCSEs:** Maths & English Grade C(4)
- **A-Level:** BBC (112 UCAS points) with B in a science subject OR BTEC Distinction, Merit, Merit
- A Health assessment/declaration and vaccinations
- DBS certificate

Course duration: Typically 36 months

Course fees & funding:

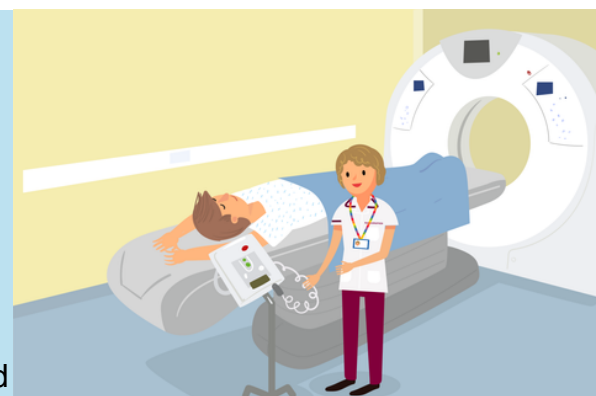
- Fees will be covered by your employer from the apprenticeship levy.
- You will not be eligible for student finance as you will receive a salary.

Website: <https://www.shu.ac.uk/study-here/higher-and-degree-apprenticeships/health-and-social-care/diagnostic-radiography>



Other Locations offering Apprenticeships in the UK:

- University of Exeter
- University of Brighton
- Canterbury Christ Church University
- University of Cumbria
- University of Keele
- University of West England



APPROVED

Healthcare
Apprenticeships

Diagnostic Radiographer (Degree)

Level
6

Duration
36
MONTHS

Ref.
ST0619

Occupation

This occupation is found in all healthcare settings including, primary, secondary and tertiary healthcare, independent and private healthcare sectors.

Professional Recognition

Society and College of Radiographers
Health and Care Professionals Council (HCPC)

RADIOGRAPHER



Therapeutic Radiographer (integrated degree) ST0620 Level 6

Therapeutic radiographers are responsible for the planning and delivery of accurate radiotherapy treatments using a wide range of technical equipment. The accuracy of these is critical to treat the targeted tumour and destroy the diseased tissue, while minimising the amount of exposure to surrounding healthy tissue.

SHEFFIELD HALLAM UNIVERSITY

Entry requirements:

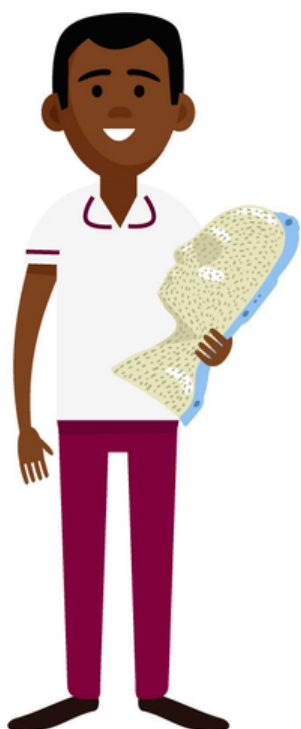
- **GCSEs:** Maths & English Grade C(4)
- **A-Level:** BBC (112 UCAS points) with B in a science subject OR BTEC Distinction, Merit, Merit
- A Health assessment/declaration and vaccinations
- DBS certificate

Course duration: 36 months.

Course fees & funding:

- Fees will be covered by your employer from the apprenticeship levy.
- You will not be eligible for student finance as you will receive a salary.

Website: <https://www.shu.ac.uk/study-here/higher-and-degree-apprenticeships/health-and-social-care/therapeutic-radiography>



Healthcare Apprenticeships		
APPROVED	Level 6	Therapeutic Radiographer (Degree)
	Duration 36 MONTHS	
	Ref. ST0620	
	Occupation	Qualification
	This occupation is found in the health and care sector and includes the NHS and private healthcare providers. The broad purpose of the occupation is to provide excellent care to patients diagnosed with cancer.	Society and College of Radiographers / Level 6 and Level 7 Health and Care Professionals Council (HCPC)



Other Locations offering Apprenticeships in the UK:

- University of West England
- London South Bank University

OCCUPATIONAL THERAPIST

Occupational Therapist (integrated degree) ST0517

Level 6

Occupational therapists support individuals whose physical or mental health, environment or social circumstances make it difficult to take part in the activities that matter to them. An occupational therapist will work to identify strengths and difficulties with activities of daily living, and implement tools to help adapt.

COVENTRY UNIVERSITY

Entry requirements: UCAS Tariff 112 points; A level - BBC (Excludes General Studies). GCSE - Minimum 5 GCSEs at grade 4 / C or above to include English and Mathematics. May vary so please speak to the provider.

Course duration: Typically 48 months

Course fees & funding:

- Fees will be covered by your employer from the apprenticeship levy. You will not be eligible for student finance as you will receive a salary.

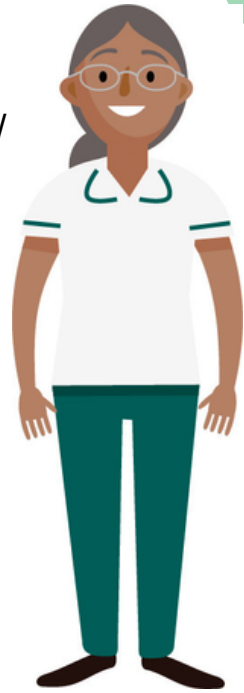
Website: <https://www.coventry.ac.uk/course-structure/ug/hls-nhs/occupational-therapy-bsc-hons/?term=2024-25>

UNIVERSITY OF WOLVERHAMPTON

Entry requirements: You must have a minimum of 3 GCSEs at grade C+ / 4 in an English-based subject, Maths and Science or equivalent qualifications. PLUS 104 UCAS points or equivalent. The University will work with employers to consider other relevant qualifications.

Course duration: 36 months

Website: <https://www.wlv.ac.uk/courses/apprenticeship-courses/occupational-therapy-degree-apprenticeship/>



Other Locations offering Apprenticeships in the UK:

- Teeside University
- University of Brighton
- The University of East Anglia
- Canterbury Christchurch University
- University of Bristol
- University of Northumbria
- University of Hertfordshire
- University of Huddersfield
- University of East London

Healthcare
Apprenticeships

Occupational Therapist (Degree)

Level
6

Duration
48
MONTHS

Ref.
ST0517

Occupation

Occupational therapy is a rewarding career which requires a highly developed knowledge and professional skill-set to enable you to work across a range of settings and environments.

Professional Registration

On successful completion of an approved programme, apprentices are eligible to apply to the HCPC for registration as an Occupational Therapist.

APPROVED



OPERATING DEPARTMENT PRACTITIONER

Operating Department Practitioner ST0582 (Integrated degree) Level 6

Operating Department Practitioners (ODP) are registered healthcare professionals specialising in caring for people of all ages before, during and after surgery. Operating department practitioners, therefore, mainly work in operating departments.

BIRMINGHAM CITY UNIVERSITY

Entry requirements:

- **GCSE's:** At least 3 GCSEs at Grade C(4) or above In Maths, English language & one other
- **A-Level:** 112 UCAS points / NVQ Level 3 in healthcare or associated subject.

Course duration: 48 months

Course fees & funding:

- Fees will be covered by your employer from the apprenticeship levy.
- You will not be eligible for student finance as you will receive a salary.

Website : <https://www.bcu.ac.uk/courses/operating-department-practice-bsc-apprenticeship-2021-22>

COVENTRY UNIVERSITY

Entry requirements:


- English & maths minimum requirement at level 2
- Apprentices will be required to complete a Health and Care Professions Council (HCPC) approved BSc (Hons) in Operating Department Practice. Apprentices without level 2 English & maths will need to achieve this level prior to completing the end-point assessment.

Course duration: 48 months

Course fees & funding:

- Fees will be covered by your employer from the apprenticeship levy.
- You will not be eligible for student finance as you will receive a salary.

Website: <https://www.coventry.ac.uk/apprenticeships/employers-area/health-and-science/>



OPERATING DEPARTMENT PRACTITIONER

Operating Department Practitioner ST0582 (integrated degree) Level 6

DERBY UNIVERSITY

Entry requirements:

- **GCSE's:** 5 GCSEs at Grade C(4) or above, including Maths & English.
- **A-Level:** 112 UCAS points or equivalent
- Level 3 qualification in a health and social care related course
- Current DBS

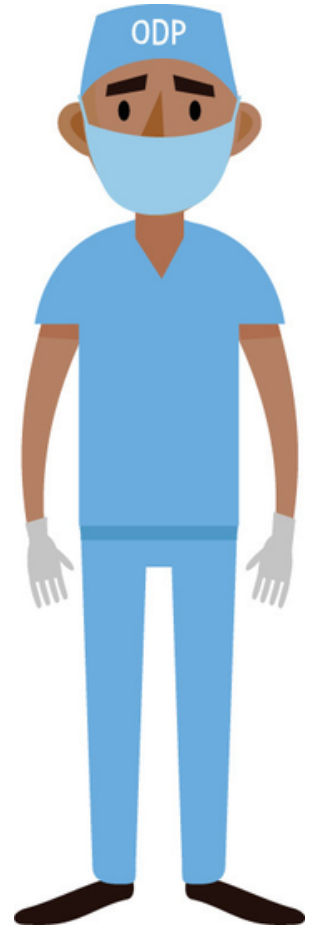
Course duration: 36 months.

Course fees & funding:

- Fees will be covered by your employer from the apprenticeship levy.
- You will not be eligible for student finance as you will receive a salary.

Website:

<https://www.derby.ac.uk/apprenticeships/operating-department-practitioner-apprenticeship/>



Other Locations offering Apprenticeships in the UK:

- University of Northumbria
- Teeside University
- Staffordshire University
- Canterbury Christchurch University
- London South Bank University
- University of Central Lancashire
- University of West London
- Buckinghamshire New University
- Cheshire College South and West
- University of Bolton
- University of Huddersfield

Healthcare
Apprenticeships

Operating Department Practitioner (Degree)

Level
6

Duration
48 MONTHS

Ref.
ST0582

Occupation

Operating Department Practitioners (ODPs) are registered healthcare professionals specialising in caring for people of all ages before, during & after surgery.

Professional Registration

On successful completion of an approved programme, apprentices are eligible to apply to the HCPC for registration as an Operating Department Practitioner.

APPROVED

PARAMEDIC

Paramedic (integrated degree) ST0519 - Level 6

West Midlands Ambulance Service

This course is directly through the West Midlands Ambulance Service, and not through another Trust.

The Student Paramedic programme is a vocationally based training pathway, leading to the completion of a Level 6 Degree apprenticeship and registration as a Paramedic. The programme takes up to 42 months and Student Paramedics earn a salary whilst completing the course.

In order to apply, you will need to be able to evidence the following;

- 5 GCSEs Grade C (4) or above (must include English Language, Maths and Science)
- A Level or equivalent Level 3 qualification (college or apprenticeship qualification)
- Full UK Driving Licence with provisional category C1

Course duration: 42 months

Website: For more information regarding the programme, please visit our website via the below link;

<https://wmas.nhs.uk/careers-staff-room/student-paramedics/>

There is not currently specific dates for recruitment for this position, however, any future vacancies will be advertised online at

www.jobs.nhs.uk, and you can set up job alerts via your NHS Jobs account to be notified of any new vacancies that become available.



APPROVED

Healthcare
Apprenticeships

Paramedic (Degree)

Level
6

Duration
36
MONTHS

Ref.
ST0567

Occupation

A career in paramedicine is a dynamic and exciting career with opportunities to work in a range of different roles as a Registered Paramedic. You will be a first-contact Allied Health Professional who works within the wider Urgent & Emergency Care setting.

Professional Registration

On successful completion of an approved programme, the apprentice will be eligible to apply to the Health and Care Professions Council (HCPC) for registration as a paramedic.

Other Locations offering Apprenticeships in the UK:

- University of Cumbria
- University of Huddersfield
- De Montford University
- Nottingham Trent University
- Teeside University

PHYSIOTHERAPIST

Physiotherapy (integrated degree) ST0519 - Level 6

Physiotherapists work with individuals to lead and deliver programmes and interventions to help people affected by injury, ageing, illness or disability. Physiotherapists use a range of physical and psychological treatment approaches, including movement, exercise and manual therapy, to optimise an individual's mobility, function and quality of life. The profession helps to encourage development and facilitate recovery, enabling people to remain independent for as long as possible.

COVENTRY UNIVERSITY

Entry requirements:

- **GCSEs:** 7 GCSEs graded 9-4 / A*-C. Including English, Maths & Science at grade 6.
- **A-Level:** A,B,B including a Biological Science subject
- **BTEC:** Distinction, Merit, Merit at Extended Diploma level in Biological Science or a health related course plus A2 Biology or A2 PE (min grade B)

Course duration: 36 months

Course fees & funding:

- Fees will be covered by your employer from the apprenticeship levy.
- You will not be eligible for student finance as you will receive a salary.

Website: <https://www.coventry.ac.uk/course-structure/ug/hls-nhs/physiotherapy-bsc-hons/?term=2023->



24

Healthcare
Apprenticeships

Physiotherapist (Degree)

Level
6

Duration
48
MONTHS

Ref.
ST0519

Occupation

Physiotherapy is a science-based profession. Physiotherapists work with individuals, and their families and carers, from birth to end of life and in a wide range of health and social care settings.

Qualification

Apprentices will be required to complete a BSc (Hons) degree in Physiotherapy or L7 qualification approved by the Health and Care Professions Council (HCPC) and accredited by the Chartered Society of Physiotherapy where the apprentice already holds a Level 6 degree.

Other Locations offering Apprenticeships in the UK:

- University of Bristol
- University of Salford
- University of East London

APPROVED

PODIATRIST

Podiatrist (integrated degree) ST0493 - Level 6

Podiatrists provide preventative advice, care, assessment, diagnosis and treatment of a range of problems affecting the lower limb. They play a pivotal part in reducing the risk of amputation, infection, pain, deformity and hospital admissions. They will undertake a range of podiatry interventions including wound care, routine skin and nail care, nail surgery, scalpel work or care for long term conditions. They provide musculoskeletal assessment and then instigate a treatment plan to improve or enhance movement or reduce pain, prescribing functional insoles where necessary.



UNIVERSITY OF PLYMOUTH

Entry requirements:

- GCSE minimum grade C/4 (or accepted equivalent) in mathematics and English
- GCSE minimum grade C/4 in a science subject
- Evidence of Level 3 qualifications
- Satisfactory Enhanced DBS check

Course duration: 36–48 months

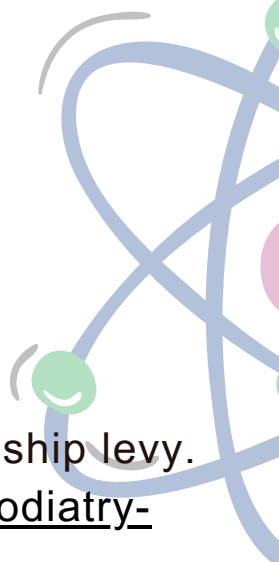
Hours of study per week: 26

Delivery: Online

Course fees & funding:

- Fees will be covered by your employer from the apprenticeship levy.

Website: <https://www.plymouth.ac.uk/study/apprenticeships/podiatry-degree-apprenticeship>



APPROVED

Healthcare Apprenticeships

Podiatrist (Degree)

Level	Occupation	Professional Registration
6	Podiatrists are registered healthcare professionals specialising in the lower limb (feet, ankles, legs), providing high-quality clinical care to people of all ages.	On completion of the apprenticeship you will be able to apply to the Health and Care Professions Council (HCPC) to register and practice as a Podiatrist in the UK.
Duration 48 MONTHS		
Ref. ST0493		

Other Locations offering Apprenticeships in the UK:

- University of East London
- University of Brighton
- University of Huddersfield
- University of Salford

PROSTHETIST & ORTHOTIST



Prosthetic & Orthotics (degree) ST0601 - Level 6

Prosthetists / Orthotists manage their own patient caseloads, work across all age ranges & with a wide variety of conditions, often providing lifetime care. Whilst autonomous practitioner with leadership & management responsibilities they work as key part of a Multi-Disciplinary Team (MDT) to provide holistic care to patients & work collaboratively with members of the MDT through the provision of rehabilitation & long-term care. Prosthetist & Orthotists instruct and guide their technicians in the specification and manufacture of prostheses and orthoses.

DERBY UNIVERSITY

Entry requirements:

- **GCSE's:** Maths & English - Grade C (4) or above.
- **A-Level:** 120 UCAS points.
- **Access to HE Diploma:** 45 credits at level 3 with a minimum of Dist: 15 Merit: 24 Pass: 6
- Verification of DBS check & Occupational health clearance.

Course duration: 36 months

Course fees & funding:

- Fees will be covered by your employer.
- You will not be eligible for student finance as you will receive a salary.

Website:

<https://www.derby.ac.uk/apprenticeships/prosthetics-and-orthotics-degree-apprenticeship/>



Healthcare Apprenticeships			
Prosthetist and Orthotist (Degree)			
APPROVED	Level 6	Occupation A Prosthetist/Orthotist is a registered clinician. This unique occupation provides the opportunity to practice in two areas of healthcare. Most will specialise in Prosthetics or Orthotics; a small number continue in both.	Professional Registration On successful completion, apprentices are eligible to apply to the HCPC for registration as Prosthetist/Orthotist
	Duration 48 MONTHS		
	Ref. ST0601		

Other Locations offering Apprenticeships in the UK:

- There are currently no other locations offering an apprenticeship

SPEECH & LANGUAGE THERAPIST

Speech & Language Therapist therapist (degree) ST0618 - Level 6

Speech and Language Therapists (SLTs) are regulated by the Health and Care Professions Council and are uniquely qualified to provide speech, language, communication and eating, drinking and swallowing therapies. They work in many settings, including hospitals, nursing homes, in the community, within charities, schools, and peoples' homes.

BIRMINGHAM CITY UNIVERSITY

Entry requirements:

- Three GCSEs at grade C/4 or above, including Mathematics and English language. Level 2 equivalent qualifications (e.g. Functional Skills) are accepted - must have been achieved at the point of enrolment.
- Plus one of the following: 112 UCAS points (Grades BBC) from 3 A levels or an equivalent L3 qualification; BTEC National/Extended Diploma Distinction, Distinction, Merit or Access to HE Diploma (Health or Science related pathway)
- Applicants who have relevant and sufficient experience can still apply by successfully completing a portfolio of evidence set by our university admissions team.

Course duration: 4 years

Website: <https://www.bcu.ac.uk/business/apprenticeships>



Other Locations offering Apprenticeships in the UK:

- The University of Essex
- The University of Sheffield

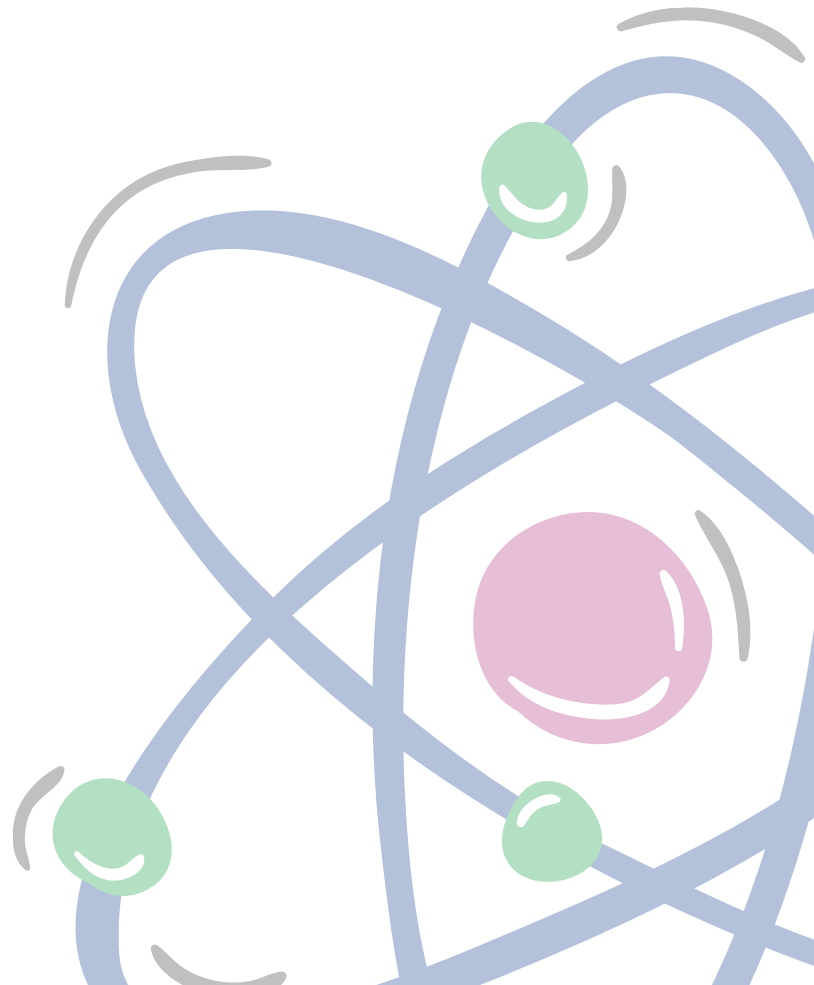
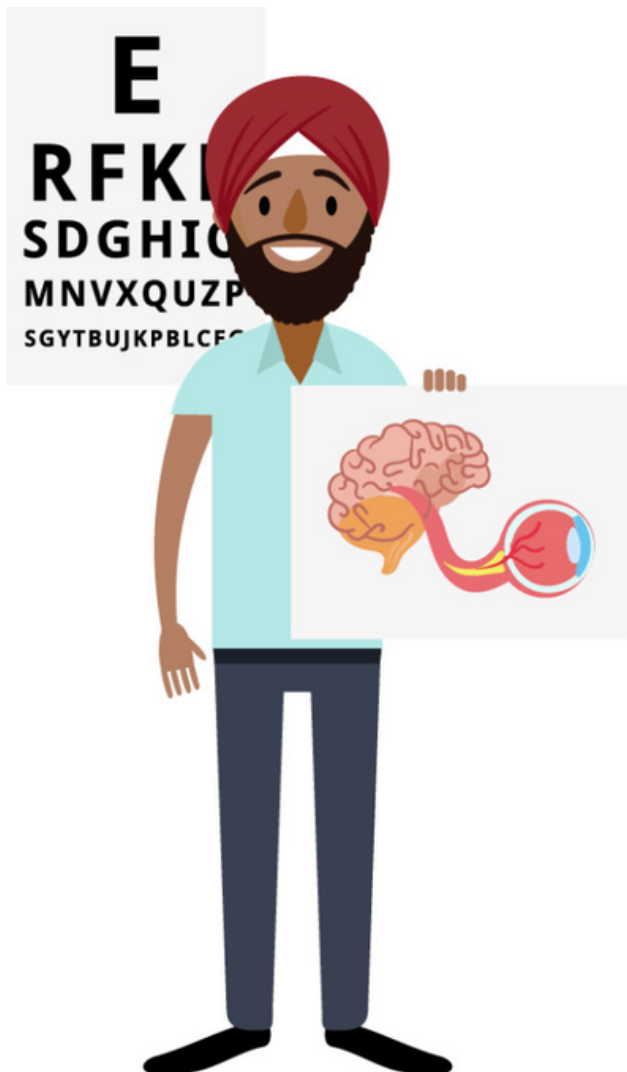
APPROVED	Healthcare Apprenticeships	Speech and Language Therapist (Degree)	
	Level 6	Occupation	Professional Recognition
	Duration 48 MONTHS	This occupation is found in a variety of contexts, including the NHS, local authorities, voluntary, community, and social enterprise sector (VCS) organisations, the education and justice sectors and in independent practice.	Health and Care Professions Council.
	Ref. ST0618		

ORTHOPTIST

Unfortunately there are no current Orthoptist apprenticeships on offer.

For more information on how to become an Orthoptist, please visit:

<https://nationalcareers.service.gov.uk/job-profiles/orthoptist>

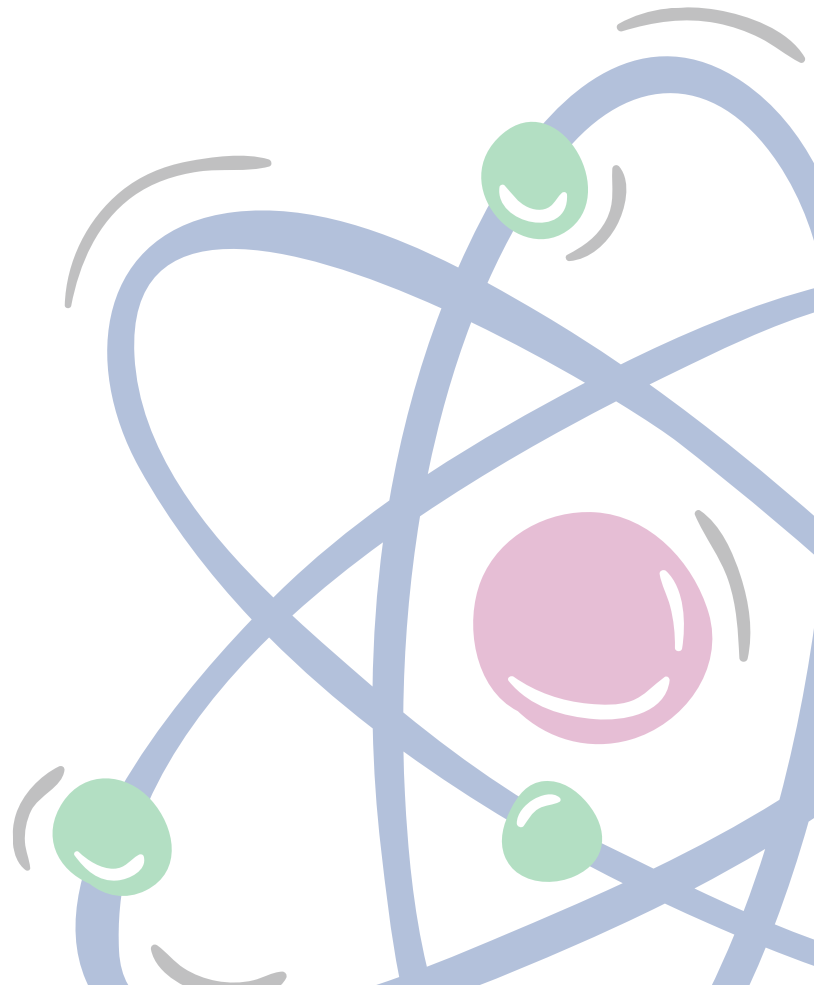
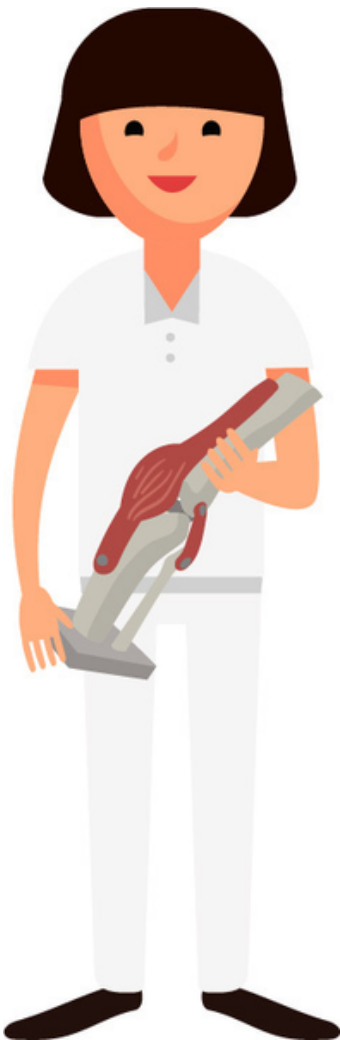


OSTEOPATH

Unfortunately there are no current Osteopath apprenticeships on offer.

For more information on how to become an Osteopath, please visit:

<https://nationalcareers.service.gov.uk/job-profiles/osteopath>

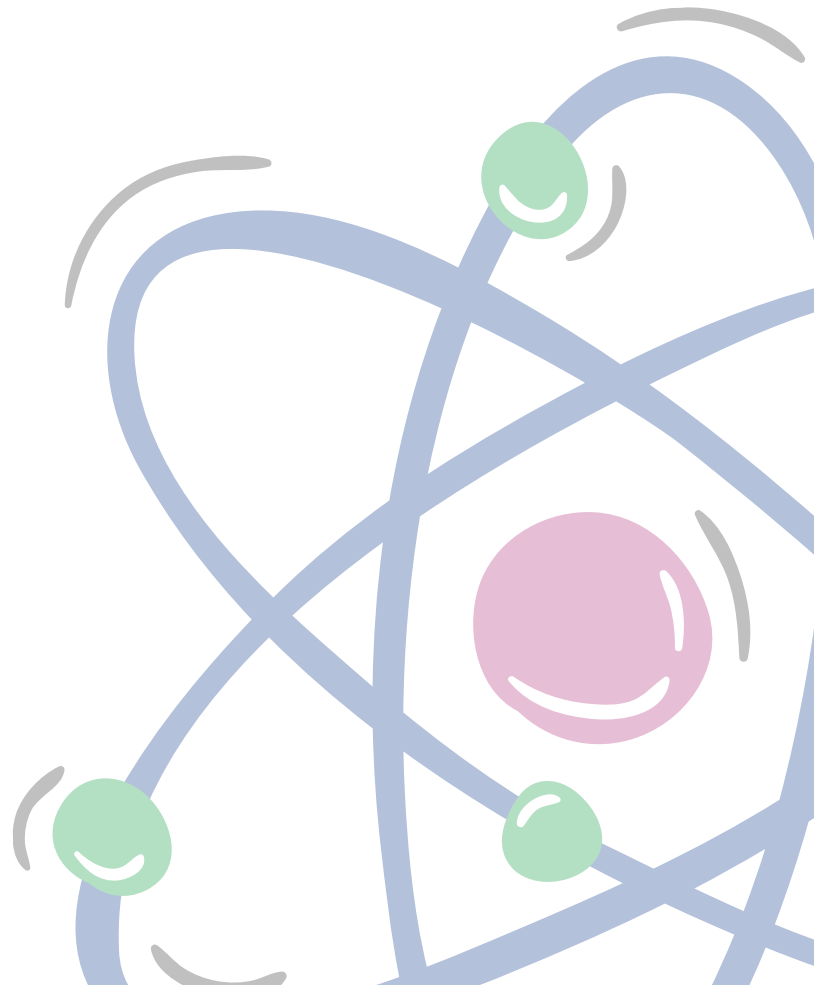


DRAMA THERAPIST

Unfortunately there are no current Drama Therapist apprenticeships on offer.

For more information on how to become an Drama Therapist, please visit:

<https://nationalcareers.service.gov.uk/job-profiles/dramatherapist>

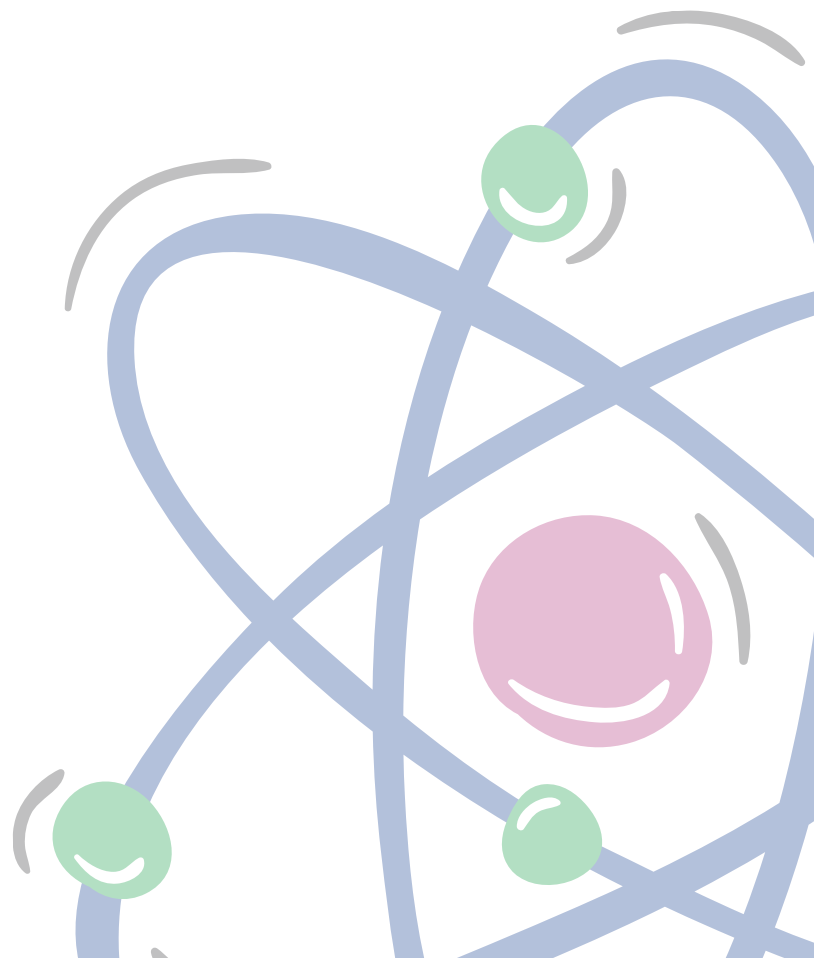


MUSIC THERAPIST

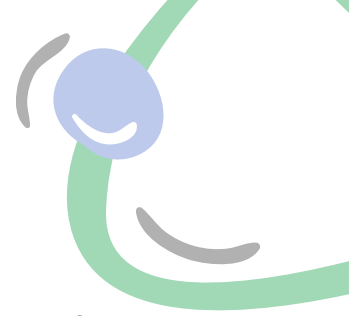
Unfortunately there are no current Music Therapist apprenticeships on offer.

For more information on how to become an Music Therapist, please visit:

<https://nationalcareers.service.gov.uk/job-profiles/music-therapist>



CHARTERED MANAGER



Chartered manager (Degree) ST0272 - Level 6

A Chartered Manager is someone who can take responsibility for people, projects, operations and/or services to deliver long term organisational success, with the professional recognition of their ability to deliver impact, behave ethically and demonstrate their commitment to continual learning and development. Professional managers capable of managing complexity and delivering impact at a strategic and/or operational level with management and leadership responsibility for setting and delivering organisational objectives through a wide range of functions.

- 87 providers as of September 2023, varying in course delivery, locality and block/day release requirements.

<https://findapprenticeshiptraining.apprenticeships.education.gov.uk/courses/55/providers>

Available at local providers with day release such as:

- University College Birmingham - <https://www.ucb.ac.uk/study/apprenticeships/>
- University of Wolverhampton - <https://www.wlv.ac.uk/courses/apprenticeship-courses/chartered-manager-degree-apprenticeship/>
- Birmingham City University - <https://www.bcu.ac.uk/business/apprenticeships>
- Coventry University - <https://www.coventry.ac.uk/apprenticeships/>
- University of Worcester - <https://www.worc.ac.uk/>

APPROVED	Healthcare Apprenticeships	<h2>Chartered Manager (Degree)</h2>	<h1>CHARTERED MANAGER</h1>
	Level 6	Occupation A Chartered Manager is someone who can take responsibility for people, projects, operations and/or services to deliver long term organisational success, with the professional recognition of their ability to deliver impact.	Link to Pro. Registration Successful apprentices will have the option to apply for professional recognition as Chartered Managers and Members of the Chartered Management Institute (CMgr MCMI).
	Duration 48 MONTHS		
	Ref. ST0272		

LEVEL 6 - ENHANCED CLINICAL PRACTITIONER (ECP)



Enhanced Clinical Practitioner (BSc or PG Diploma
ST0895 - Level 6

Enhanced Clinical Practitioners (ECPs) are qualified health and social care professionals who are working at an enhanced level of practice with specific knowledge and skills in a field of expertise. They manage a discrete aspect of a patient's care within their current level of practice, which will be particular to a specific context, be it a client group, a skill set or an organisational context. This is **in contrast to Advanced Clinical Practitioners** who have developed their knowledge and skills to an advanced level of practice and would manage the whole episode of a patient's clinical care from start to finish.

UNIVERSITY OF KEELE

Entry requirements:

- Applicants must be currently registered with a relevant regulatory body and working in practice aligned to one of the specialist Enhanced Clinical Practitioner routes.
- Hold a Diploma in Higher Education in a related subject (or equivalent) or Recognition of Prior Experiential learning will be considered.
- Apprentices without level 2 English and Mathematics will need to achieve this prior to commencing this apprenticeship.

Course duration: 18 months.

Course fees & funding:

- Fees will be covered by your employer.
- You will not be eligible for student finance as you will receive a salary.

Website:

<https://www.keele.ac.uk/apprenticeships/apprenticeshipprogrammes/enhancedclinicalpractitioner/>

ENHANCED
CLINICAL
PRACTITIONER
APPRENTICESHIP

Other Locations offering Apprenticeships in the UK:

- University of St Mark and St John
- University of Greenwich
- University College London

LEVEL 7 - ADVANCED CLINICAL PRACTITIONER (ACP)



Advanced Clinical Practitioner (ST0564)

- Clinicians who demonstrate expertise in their scope of practice
- For clinical development in their specialism
- Coventry University and Birmingham City University (BCU) do this course with day release options and are the most local providers to the Black Country. Other localities utilised by the Black Country providers include University of Warwick, University of Birmingham and Anglia Ruskin University. However there are over 50 providers as of October 2023.

<https://haso.skillsforhealth.org.uk/standards/#standard-355>

Providers:

BCU - <https://www.bcu.ac.uk/courses/advanced-clinical-practice-msc-degree-apprenticeship-2023-24>

Coventry - <https://www.instituteforapprenticeships.org/apprenticeship-standards/advanced-clinical-practitioner-integrated-degree-v1-0>

APPROVED

Healthcare Apprenticeships

Level 7

Duration 36 MONTHS

Ref. ST0564

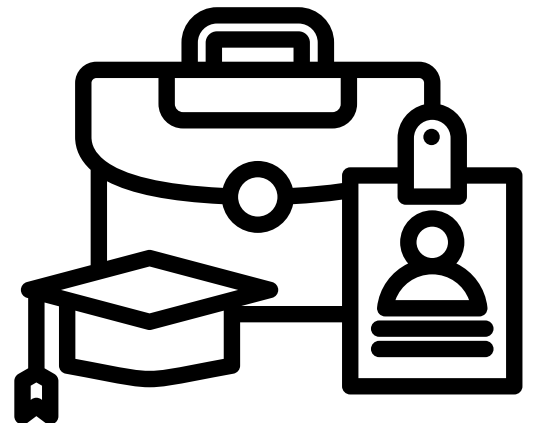
Advanced Clinical Practitioner (Degree)

Occupation	Qualification
Advanced Clinical Practitioners are experienced clinicians who demonstrate expertise in their scope of practice. Advanced Clinical Practitioners manage defined episodes of clinical care independently.	Apprentices must complete a Master's degree in Advanced Clinical Practice. Apprentices without level 2 English and maths will need to achieve this level prior to taking the end-point assessment.

LEVEL 7 - SENIOR LEADER AWARD

Senior Leader Award (ST0480)

- Course for strategic leadership development. A leader is someone who has senior management responsibility, and this can include formal governance/director responsibilities. They are responsible for direction and vision, providing a clear sense of purpose and driving strategic intent. They take into account market trends and environmental influences, identifying longer-term opportunities and risks. Through inclusive leadership, they are responsible for developing ethical, innovative and supportive cultures with the ability to deliver results. They are a role model, with responsibility for those in senior positions/significant organisational budgets.
- 141 providers as of November 2023, varying in course delivery, locality and block/day release requirements:
<https://findapprenticeshiptraining.apprenticeships.education.gov.uk/courses/236/providers?location=-1>



APPROVED	Healthcare Apprenticeships	Senior Leader (Degree)	
	Level 7	Occupation Professional strategic leaders in the private, public or third sector and all sizes of organisation, who lead, manage and direct organisations.	Qualification Successful apprentices will achieve a Master's degree in management [either MA, MSc or MBA]. English and Maths will be required at a minimum of Level 2 prior to the end point assessment.
	Duration 24-30 MONTHS		
	Ref. ST0480		

LEVEL 7 - ART THERAPIST

Arts Therapist (Integrated degree) ST0633

TEESIDE UNIVERSITY

This course is the only Degree Apprenticeship in England and has the potential to offer a dynamic, exciting, and personally rewarding career. The course offers a broad understanding of art psychotherapy, covering a range of clinical, theoretical, and practical components.

Entry requirements:

- Maths and English qualifications at level 2 (or equivalent)
- Apprentices will need to be proficient in art before applying to this apprenticeship e.g. holding a degree or with experiential equivalence.
- Able to declare that they are not currently subject to any disciplinary actions or the subject of a current investigation.
- For general information please see our overview of entry requirements

Course duration: 24 months

Course fees & funding:

- Fees will be covered by your employer from the apprenticeship levy.
- You will not be eligible for student finance as you will receive a salary.

Website:

[https://www.tees.ac.uk/postgraduate_courses/art & design/msc arts the rapist_\(degree_apprenticeship\).cfm](https://www.tees.ac.uk/postgraduate_courses/art_%20amp_%20design/msc_arts_the_therapist_(degree_apprenticeship).cfm)



APPROVED	Healthcare Apprenticeships	Arts Therapist (Degree)	
	Level 7	Occupation	Qualification
	Duration 24 MONTHS	This occupation is found in health, education and social care. Arts Therapists work in a range of settings such as the NHS, local authorities, voluntary, or private sector, hospitals, clinics, education, shelters, hospices, or prisons.	Apprentices without level 2 English and maths will need to achieve this level prior to taking the End-Point Assessment.
	Ref. ST0633		

NHS LEADERSHIP ACADEMY COURSES

The NHS Leadership Academy is working with provider partners to offer access to our leadership development programmes as part of apprenticeships, in line with the NHS People Plan.

These apprenticeships provide learners with the opportunity to gain a formally recognised qualification from the apprenticeship and NHS Leadership Academy's leadership development programme in one course.

From Leadership and Management to Digital, the NHS Leadership Academy work with partners to provide a range of apprenticeships, specifically suited to the health and social care sector.

Examples of courses available are shown below:

Team Leader – Level 3 (with Edward Jenner)



Online 12 month level 3 apprenticeship with [Edward Jenner Programme](#) helping you to build your knowledge on management responsibilities.

Operations/Departmental Manager – Level 5 (with Mary Seacole)



Online 30 month level 5 apprenticeship with [Mary Seacole](#) programme preparing you to navigate challenges that affect productivity, growth and successful change.

Senior Leader Apprenticeship – Level 7 (with Rosalind Franklin programme) CMI



A 15 month programme with the [Rosalind Franklin](#) programme. To develop skills and knowledge to provide clear, inclusive and strategic leadership and direction relating to your area of responsibility within your organisation.

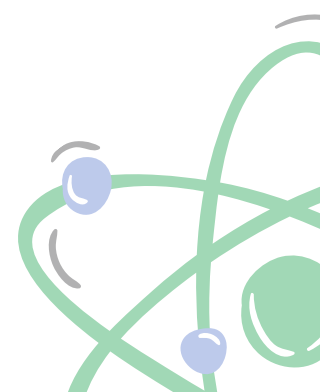
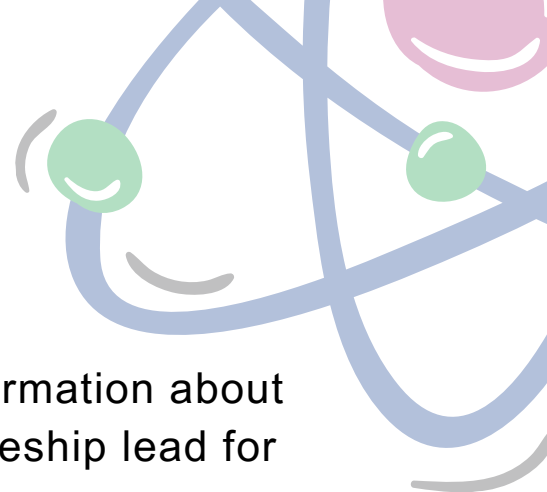
Please explore the link below for more information on courses, and speak to your relevant Trust lead.

<https://www.leadershipacademy.nhs.uk/programmes/apprenticeships/>

TRUST CONTACTS

With your managers support, to get further information about apprenticeships, please contact your apprenticeship lead for your Trust or locality.

TRUST	EMAIL CONTACT(S)
Black Country Health Care NHS Foundation Trust	bchft.apprenticeships@nhs.net
Dudley Group Foundation Trust	Dgft.apprentice@nhs.net
Dudley Integrated Health and Care NHS Trust	Zoe.dixon5@nhs.net
Sandwell and West Birmingham NHS Trust	Swbh.apprenticeship@nhs.net
The Royal Wolverhampton Trust	Rwh-tr.wblapprenticeships@nhs.net
Walsall Healthcare NHS Trust	heather.morris12@nhs.net ; kirsty.vigrass@nhs.net



USEFUL LINKS



<https://www.longtermplan.nhs.uk/>

<https://www.england.nhs.uk/publication/nhs-long-term-workforce-plan/>

<https://www.leadershipacademy.nhs.uk/programmes/apprenticeships/>

<https://www.apprenticeships.gov.uk/influencers/what-is-an-apprenticeship#>

<https://apprenticeshipguide.co.uk/what-is-an-apprenticeship/>

<https://findapprenticeshiptraining.apprenticeships.education.gov.uk/courses>

<https://haso.skillsforhealth.org.uk/standards/#3aw2ga-accordion-label>

<https://nationalcareers.service.gov.uk/job-categories/healthcare>

<https://www.england.nhs.uk/ahp/role/>

<http://www.jobs.nhs.uk/>

<https://openawards.org.uk/what-we-offer/functional-skills/>

