

Care better every day



CARE BETTER FOR OUR ENVIRONMENT

2020 // 2025



Supported by our values of
Care, Respect and Responsibility

HOME

INTRODUCTION

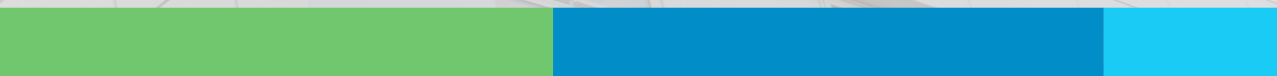
THE GREEN PLAN

OUR VISION

The Green Plan is our response to the challenges we face to reduce carbon emissions. The NHS is committed to achieving net zero carbon emissions in 2040 ahead of the UK Government target.

OUR FOCUS FOR 2021/22

We will focus on energy consumption and the management of waste, including recycling.



WHY WE CARE ABOUT THE ENVIRONMENT

The Dudley Group NHS Foundation Trust recognises it has a responsibility to find ways to deliver world class healthcare that is also environmentally, socially and financially sustainable.

HOW WILL WE ACHIEVE OUR GOALS?

We are dedicated to ensuring we create and embed sustainable models of care throughout our operations and to ensuring our operations, and our estates, are as efficient, sustainable and resilient as they possibly can be.

WHO WILL BE INVOLVED

Our sustainability journey will require the concerted effort of all our staff and we will need to work with stakeholders to achieve our aims.



WHAT HAVE WE ACHIEVED SO FAR?

RECYCLING

Our estates partner Mitie has increased the number of recycling points across the Trust and will continue to do so. These points provide recycling for various items including: mixed recycling points, paper recycling, printing cartridges and batteries. This makes it easier for staff and visitors to recycle.

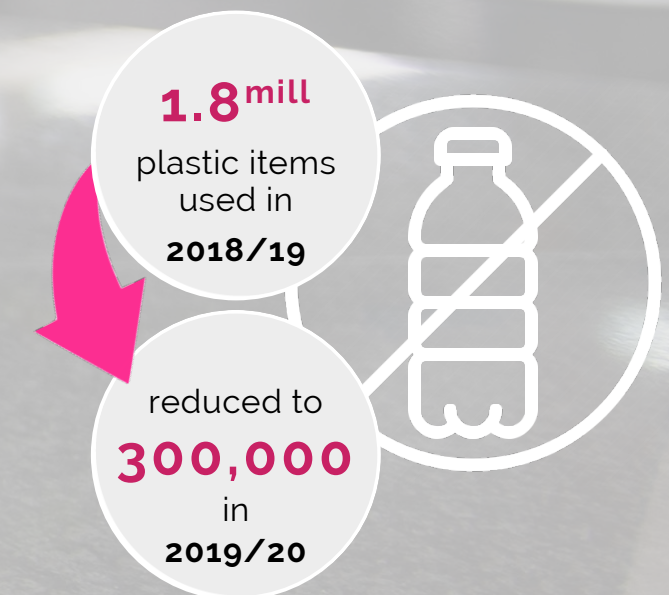
We continue to monitor the waste we produce and increase the proportion that is recycled.

FINDING GREENER ALTERNATIVES

For example, we no longer use desflurane as an anaesthetic gas which has higher carbon emissions than alternatives.

SINGLE-USE PLASTICS

We signed the 'NHS Single-Use Plastics Reduction Campaign' pledge. Our catering services now use opt for compostable cutlery and take-away boxes, they also use paper bags for loose items.



LED LIGHTING

Invested in LED lighting in North Block at Russells Halls Hospital and the multi-storey car park to reduce energy consumption.

VIRTUAL OUTPATIENT APPOINTMENTS

Over one third of outpatient appointments are now offered by video or telephone, avoiding the need for patients to travel to hospital. This has increased rapidly as result of the coronavirus pandemic.

WORK FROM HOME TECHNOLOGY

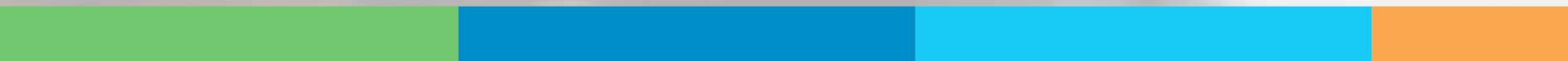
Supporting work staff with from home technology such virtual conferencing facilities as a result of the pandemic has lead to reductions in commuting and work-related travel.

ENCOURAGING ACTIVE TRAVEL

We offer our staff discounts to encourage the use of public transport and active travel such as cycling.

REPORTING

The Trust Board of Directors will receive a report twice a year. We will include progress on the Green Plan in our annual report which we publish here on our website.



FUTURE PLANS

A GREENER SITE

We will work with our estates partners, Summit Healthcare and Mitie, to enhance the green spaces on our estates and promote biodiversity.

CAPITAL DEVELOPMENTS

We will ensure that any capital projects such as the redevelopment of the Emergency Department at Russells Hall Hospital take full consideration of the environmental impact.

SUPPORT FOR ELECTRIC CARS

We plan to introduce electric vehicle charging points into both staff and visitor car parks.

EMITTING LESS

Working with our PFI partners, we plan to introduce schemes that will identify the areas that use the most energy and find ways to cut wastage and improve efficiency e.g. better control of the heating of our buildings.

CONSUMING LESS

We have identified the items we use in the hospital that cause the most carbon emissions to manufacture and will explore how we can purchase items with lower emissions.

We will monitor the amount of waste we generate and will provide more recycling facilities so that it is easier for staff, patients and visitors to recycle.



HELP OUR TRUST BE MORE SUSTAINABLE

We encourage responsible consumption of resources with our 3 pledges:



Recycling - sort it!

Put the right stuff in
the right bin



Energy - save it!

Turn off your lights,
fans and computers



Plastic - avoid it!

Reduce your use of
disposable cutlery and cups



EVERYONE HAS THEIR PART TO PLAY IN RESPONDING TO CLIMATE CHANGE

Join us in our sustainability journey to help us realise
our ambitions for our staff and the people of Dudley.

GET IN TOUCH

dgft.greenteam@nhs.net

  **DudleyGroupNHS**

NHS

The Dudley Group
NHS Foundation Trust



PRESS ESC